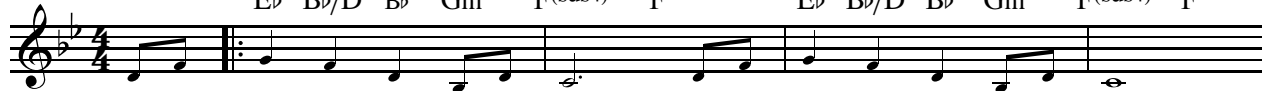


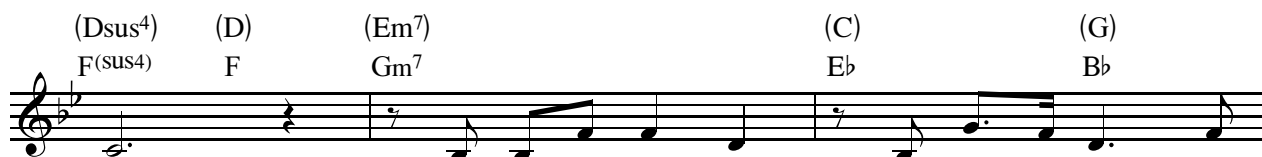
HOW SURE AND STEADFAST

HOW SURE AND STEADFAST (IRREGULAR)

♩ = 72 Capo 3 (C) (G/B) (E) (Em) (Dsus⁴) (D) (C) (G/B) (G) (Em) (Dsus⁴) (D)
 E♭ B♭/D B♭ Gm F(sus⁴) F E♭ B♭/D B♭ Gm F(sus⁴) F

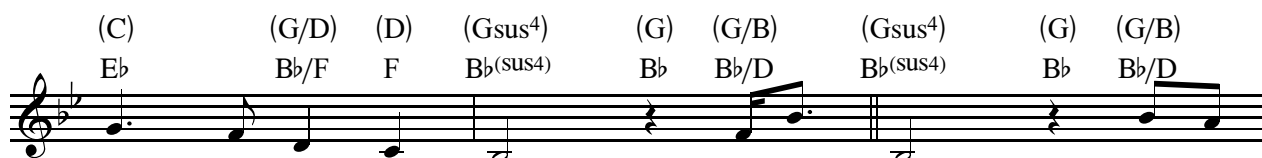


1. How sure and stead-fast through eve-ry trial the age-less rock of
 2. Je-sus, our an-chor in troub-led waves, a-bid-ing through the



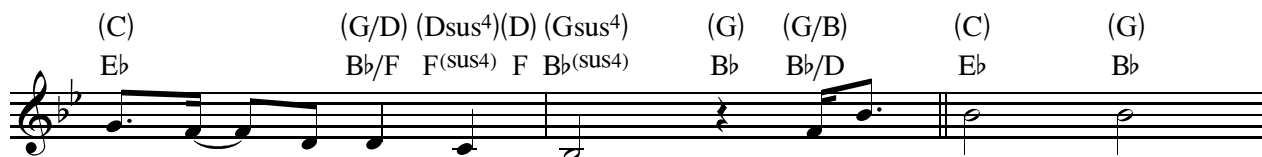
Christ: our might-y ref-uge of end-less love through
 storm. In eve-ry sea-son that comes our way your

I. First time to chorus § 2. Verse 2 only



eve-ry chang-ing tide. You are
 hold re-mains se-cure: you will

Chorus §



hold us for ev-er-more. You are faith-ful,



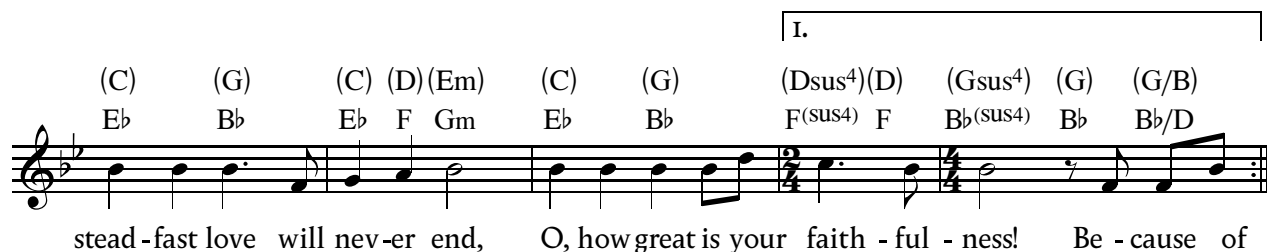
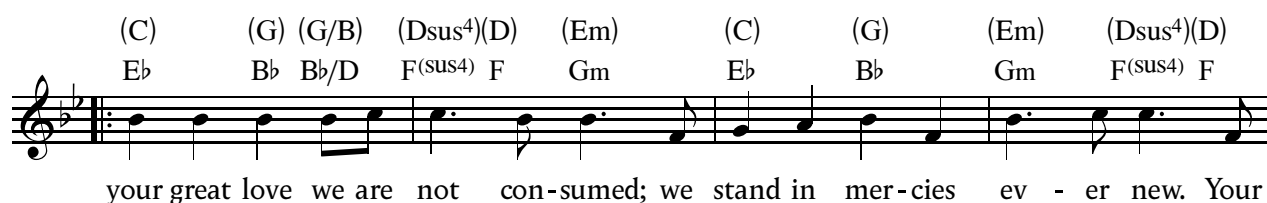
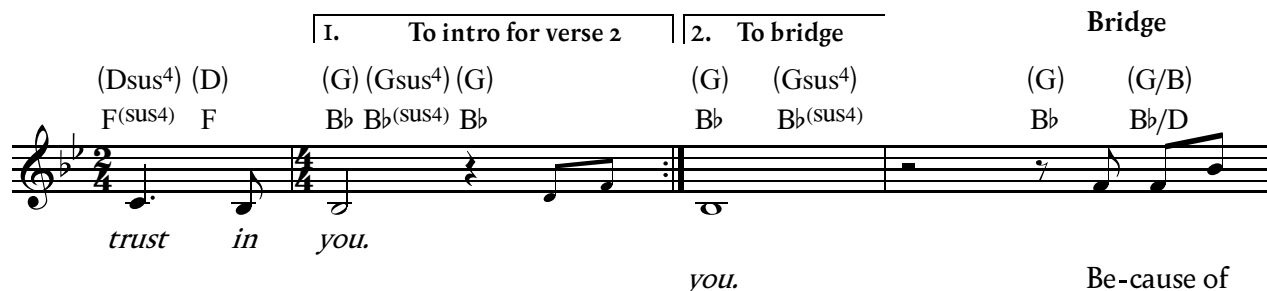
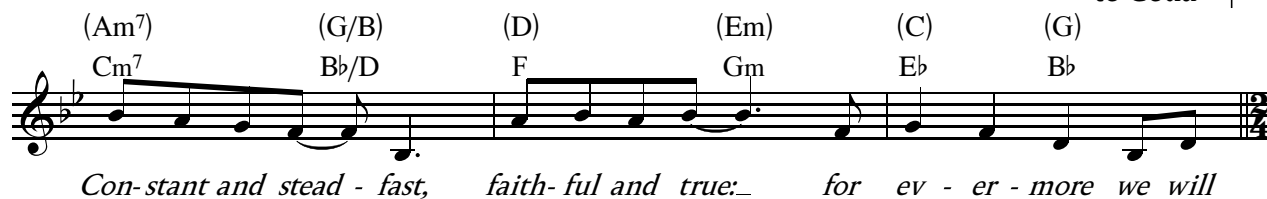
ev-er sure, your end-less mer-cies will en-dure.

WORDS AND MUSIC: BEN SLEE
 © 2021 BEN SLEE bensleemusic.com
 BASED ON A PIANO ARRANGEMENT BY MATT WILKINSON
 CCLI No. 7178335 SCRIPTURES: Lam. 3:22-23; Mal. 3:6

Visit praise.org.uk for music, lyrics and additional arrangements



Last time
to Coda



Coda

